



**POLYMER  
LOGISTICS**

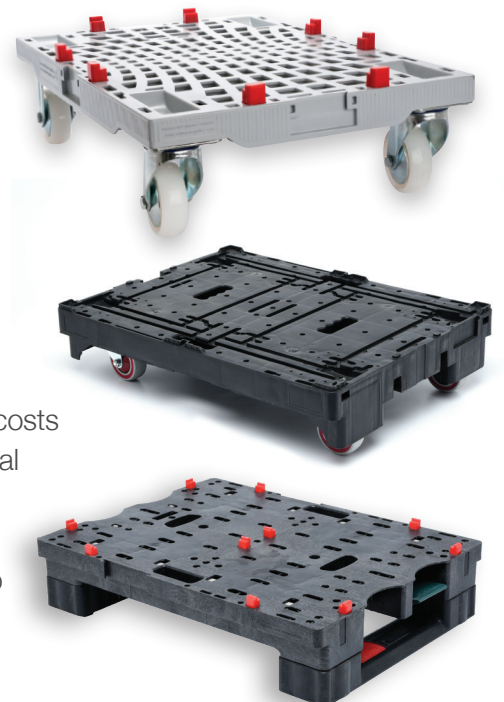
Smart Retail Solutions Partner



# Rolling is Easy

**Our eco-friendly,  
retail-ready, Dolly saves  
you time and transport  
headaches**

- Revolutionary 'one-touch' dollies that function as well for transport, as they do for in-store display
- Conveniently doubles as shelving, eliminating both time & replenishment costs
- Enhanced maneuverability. Just roll and lock it in place, no need for special equipment
- Pop-up/rims system secures your trays and crates on demand
- Easy-to-clean polymer - resists moisture, insects and fungi; Impervious to acids, fats, solvents and odors.
- Easy on workers- Durable and light- weight without the hazards of splinters or wires
- Environmentally friendly- reducing the need for fragile wood pallets



## Technical Details



### Dolly 103

Dimensions: 31.52(l) x 23.64(w) x 7.09(h)mm

Weight: 24.03 lb

Load: 1102.50 lb

Material: PP

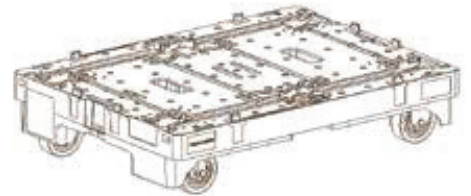
Brake: No

Pop-up: Yes

Side rims: Yes

Handle: Yes

Antislip rubber: Yes



### Dolly 106

Dimensions: 31.52(l) x 23.64(w) x 6.90(h)in

Weight: 21.39 lb

Load: 1102.50 lb

Material: PP

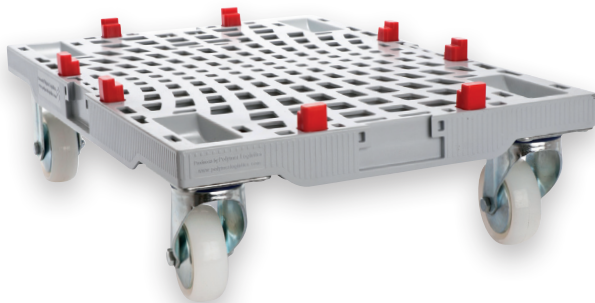
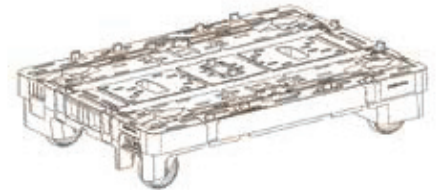
Brake: Yes

Pop-up: No

Side rims: Yes

Handle: Yes

Antislip rubber: Yes



### 1/4 Dolly

Dimensions: 23.64(l) x 15.76(w) x 5.91(h)in

Weight: 9.62 lb

Load: 551.25 lb

Material: PP

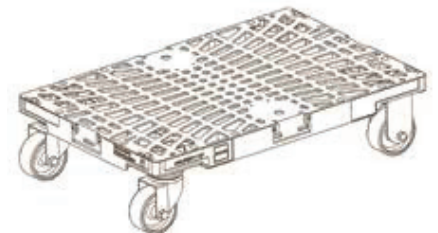
Brake: No

Pop-up: Yes

Side rims: Yes

Handle: Yes

Antislip rubber: No



- Polymer Logistics reserves the right to change any of the above mentioned specifications without prior notice.
- User Responsibility: It is the responsibility of all users and hires to inform any other users concerning the details provided on this specifications sheet and the Polymer Logistics Health & Safety Guidelines. Users are responsible for completing Safe System Work and risk assessments prior to equipment use.

